

MI/O Extension Total Solution

Build Intelligent Systems Quickly

- ✓ MI/O Extension SBC
- ✓ MI/O Extension Module
- ✓ MI/O Extension Chassis
- ✓ MI/O Evaluation Board



ADVANTECH

Enabling an Intelligent Planet

MI/O Extension

Flexible Design Made Easy

MIO.advantech.com

MI/O Extension Single Board Computer

The Flexible SBC with MI/O Extension Modules

Advantech's innovative MI/O (Multiple I/O) Extension Single Board Computer is strategically positioned between Single Board Computers (SBC) and Computer On Modules (COM). MI/O Extension SBC comes equipped with flexible multiple I/O which helps deliver efficient scheduling, less development resources, and provides system integrators with optimized solutions in a cost-effective way, while still securing their domain know-how in key vertical industrial technologies.

By connecting MI/O Extension modules through high speed sockets, customers can get the most flexible I/O choices to fulfill vertical application requirements. The MI/O Extension connector (MIOe) is ready for additional extended interfaces and future technology trends and currently supports: DisplayPort, PCIe x1*, LPC, SMBus, USB 2.0/USB 3.0, audio line-out and power.

The design of MI/O Extension takes into account future software/hardware/firmware expansion and upgrades. The MI/O Extension module design document is available for reference as well as an evaluation board for MIOe interface verification and testing. These features are all part of Advantech's thoughtful effort to help system integrators flexibly develop market-sensitive solutions to seize those promising business opportunities!

*Up to 4 pairs depending on different platform specifications

MI/O-Ultra

100 mm (3.9") width, 72 mm (2.8") height. Front side shows Thermal Zone and Memory. Back side shows Rear I/O connector coastline, CF/CFast, I/O Zone, and MIOe connector.

MIOe Pin Assignment

- DisplayPort
- 4 PCIe x1
- USB 3.0
- USB 2.0
- LPC
- HD Audio line out
- SMBus
- +12V/ +5V Power

- Core TDP : Under 8 W
- Ultra low power consumption
- Ultra small form factor (same dimension as 2.5" hard disk or PICO-ITX)
- Competitive pricing with simple I/O

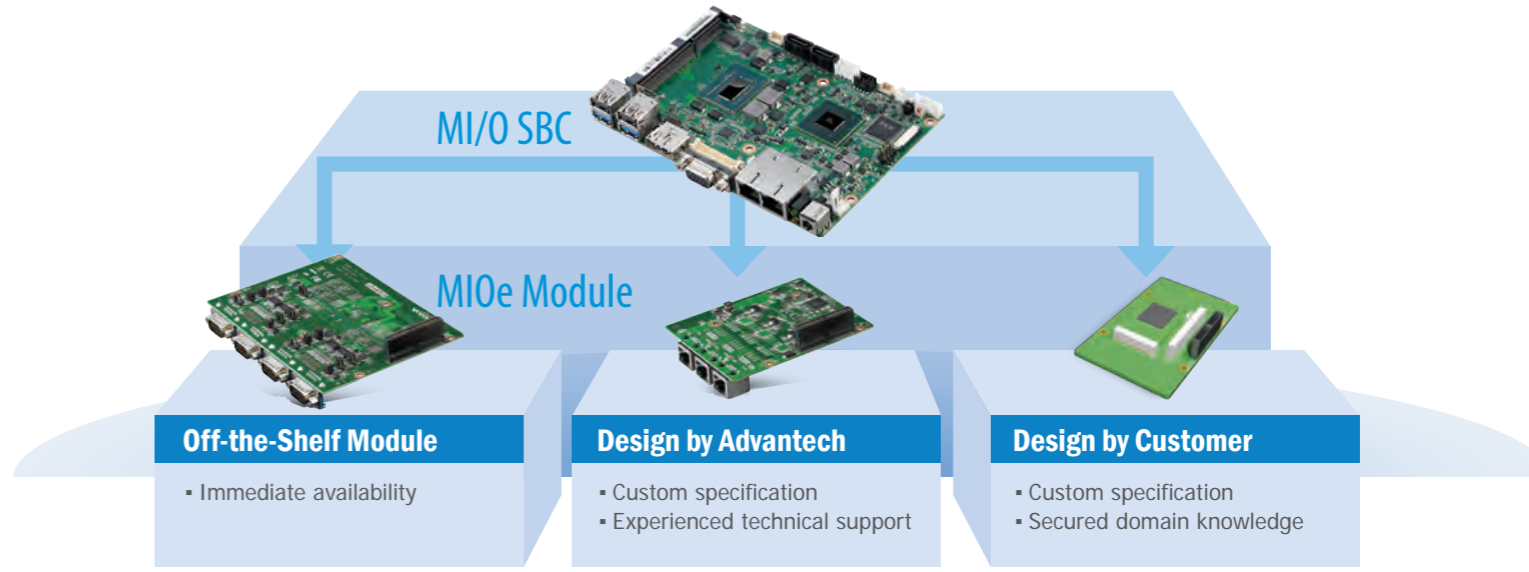
MI/O-Compact

146 mm (5.7") width, 102 mm (4.0") height. Front side shows Thermal Zone and Dip Type I/O Zone. Back side shows Rear I/O connector coastline, 2.5" Hard Disk, CF/CFast, PCIe Mini Card Expansion, SMT Type I/O Zone, and MIOe connector.

- Core TDP : 9 W – 40 W
- Rich I/O
- Compact size same as 3.5" hard disk
- Supports extended temperature design
- Supports iManager
- Middle to high-end performance platforms

Flexible Service Model - Co-development and Self-development

System Integrators can extend MI/O SBC functionality by implementing MIOe modules with unified MIOe connector. Advantech provides a range of application modules which assists System Integrators in designing their own applications with help from the MI/O extension module design guide on Advantech's website. We also provide a co-development working model with customers. Customers can choose either "Design by Advantech" or "Design by Customer" with Advantech's assistance.



The MI/O Development Process

The co-development working model, called "MIOe Co-development Support," follows Advantech's project development procedures. If customers choose a self-development model, Advantech will assist in process reviews with several checkpoints. Both working models require the following check points:

At the beginning of a project

Advantech assists customers to review block diagrams and evaluate the pros & cons of co-development and self-development models. MI/O Extension specifications, MIOe design guide, evaluation board mechanical drawings and more are available for customers to download. Please visit <http://mio.advantech.com>

Design by Advantech

Check Points

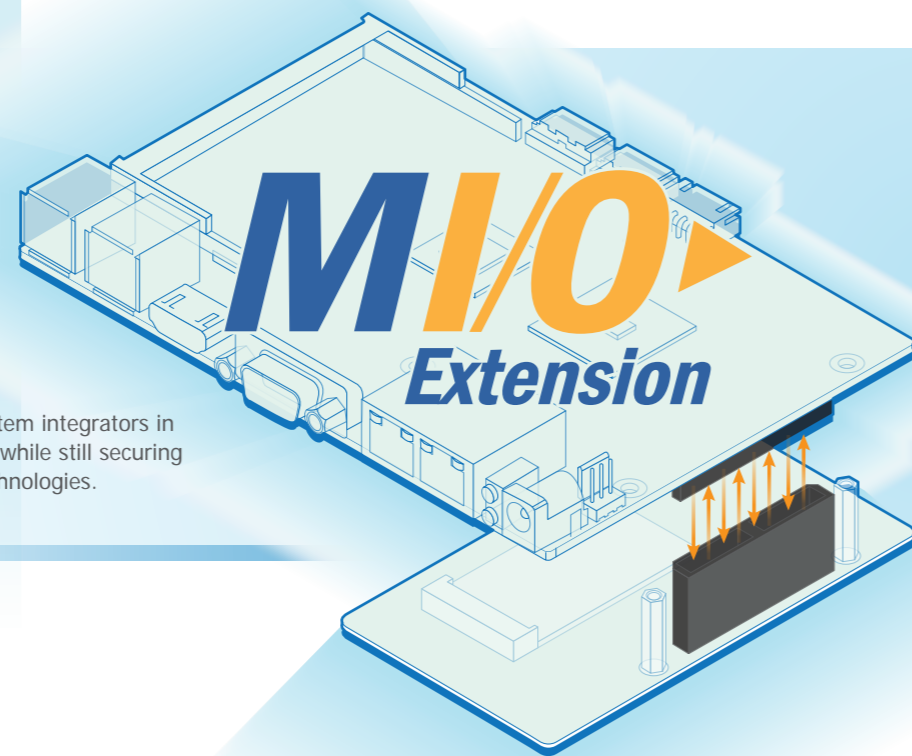
- Step 1: Project Consultancy**
 - Advantech proposes project concept, block diagram, specifications, schedule and quotation
 - Customer approval
- Step 2: Schematics Design**
 - Advantech proposes schematics
- Step 3: Placement Design**
 - Advantech proposes 2D/3D drawing
 - Customer approval
- Step 4: Layout Design**
 - Advantech proposes layout routing
- Step 5: Production**
 - Advantech implements sample assembly
- Step 6: Verification**
 - Customer and Advantech FAE verify the product

Design by Customer

Check Points

- Step 1: Schematics Review**
 - Advantech assists customer to review schematics to ensure it meets MIOe design guide
- Step 2: Placement Review**
 - Advantech provides MIOe height limitation and 3D STEP file for customer reference
- Step 3: Layout Review**
 - Advantech provides PCB stack-up and impedance suggestions
- Step 4: Production**
 - Customer implements sample assembly
- Step 5: Verification**
 - Customer verifies the product along with Advantech's assistance

Note: Advantech preserves the right to charge design NRE depending on service scale.



Key Features

Advantech introduces MI/O Extension to assist system integrators in quickly providing optimal solutions to their clients, while still securing their competitive edge in key vertical industrial technologies.



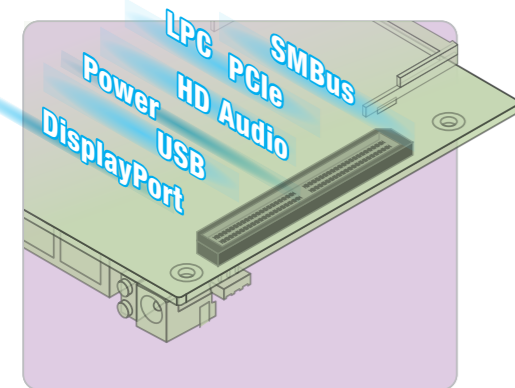
Why choose MI/O Extension SBC for your embedded development

- Highly integrated design saves up to 20% of system space
- Flexibility for future I/O expansion and upgrades
- Design document and evaluation board support
- Time-saving and cost-effective solution for system integrators



Special Mechanical Design

- Advanced thermal design
- Integrated I/O
- Cableless design



MI/Oe Unified Connector

MI/O Extension has one unified MI/Oe connector which supports additional extended interfaces that give more flexible support to bundled I/O modules, either from Advantech or modules designed by the customer. MI/Oe connector has various height choices from 5mm to 25mm to meet different module requirement.

Interface functions include:

- DisplayPort: HDMI, LVDS, DVI, CRT or eDP display interface
- PCIe x1: GbE, USB 3.0, SATA/RAID, FPGA or PCI expansion
- USB 2.0/ 3.0: super speed storage, capture card, HD webcam & display interface
- LPC: legacy bus & Multi-UART, PS2, GPIO, FDD, IR, Parallel port from super I/O
- HD Audio: Line out, keep flexibility with selected amplifier
- SMBus: GPIO control, smart battery/ charger, W/R EEPROM
- Power: supported by MI/O Extension SBC

MI/Oe connector has the following features

High speed ground plane header

- Multi high speed protocol supported
- Extended life product
- 10 years in Mixed Flowing Gas (MFG)

Various height choice

- 5, 8, 11, 16, 19, 25mm height combination for different applications

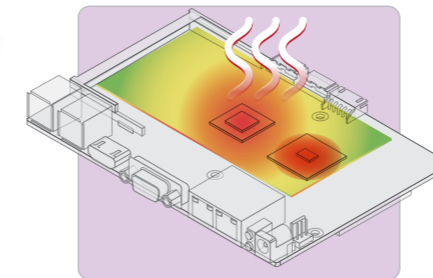
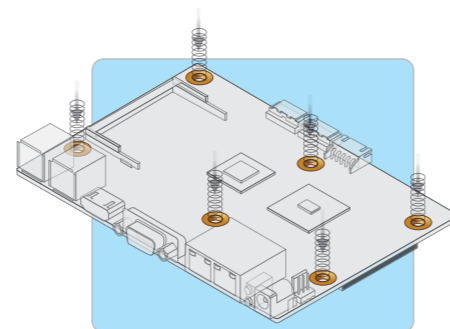
Rich library reference

- Electrical/3D model, PCB library/Footprint
- Final inch layout reference

Unified System Screw Holes

MI/O Extension provides unified screw mounting holes for easier thermal solution assembly and system integration.

- Easier thermal solution assembly
- Easier system maintenance
- Easier platform upgrades



Concentrated Thermal Design

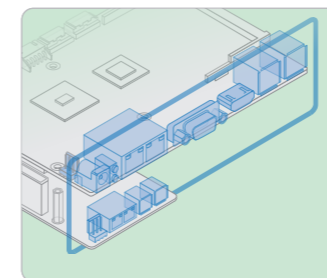
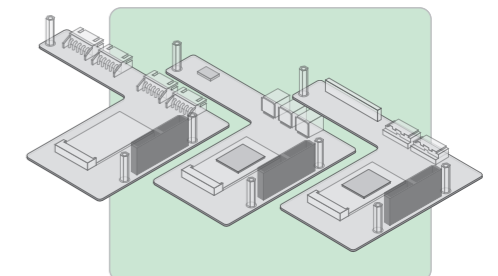
Traditionally, heat flows were routed on the top and bottom sides of embedded boards. Advantech MI/O Extension SBC is designed with a concentrated thermal design so that all heat generation is on the top side only, dispersing heat via the heatsink or the heat spreader with better results.

- Covers CPU, the southbridge, memory, power and active IC
- Maximum thermal space
- Heat spreader/heatsink integration
- Simplifies system design
- Thermally sensitive parts on the bottom side to prevent heat problems.

Expansion Module Options

Advantech has developed a series of modules that are ready for future interface designs and made for flexible vertical application demands.

- Display module: 48-bit LVDS/ DisplayPort/ USB2.0
- Communication module: Triple GbE
- Multiple I/O module: Multiple COM Ports
- Evaluation Board: for flexible interface verification
- Your own MI/Oe module to secure your domain know-how



Reduced Cabling

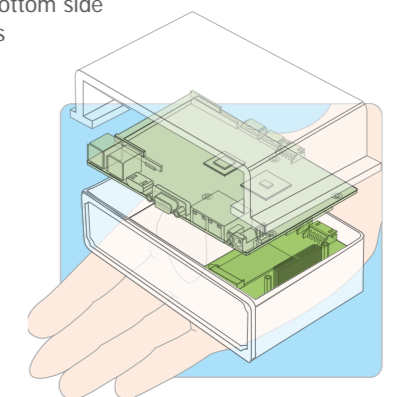
MI/O Extension single board computers come with unified I/O connector coastlines, CompactFlash and PCIe Mini Card locations. An area under the board is also designated for a 2.5" hard disk. The structural uniformity helps eradicate possible problems with integration during future upgrades.

- Less cabling and lockable connectors on the bottom side
- Reduced assembly, complexity, and labor costs

Compact Mechanical Design

Compact mechanical designs and simplified layouts address the major concerns of embedded system integrators.

- Reduced system assembly parts
- Saves up to 20% system space
- Optional heat spreader for lower total height



MI/O Superior Thermal Solution

Advantech MI/O SBC is with a concentrated thermal design. All heat generating components are placed on the top side, dispersing heat via the heatsink or the heat spreader. This concentrated design provides lots of benefits for system integration and enhance reliability.

Utmost Utilization of Heatsink

Heatsink/heat spreader covers CPU, south bridge, memory and most heat generating components.

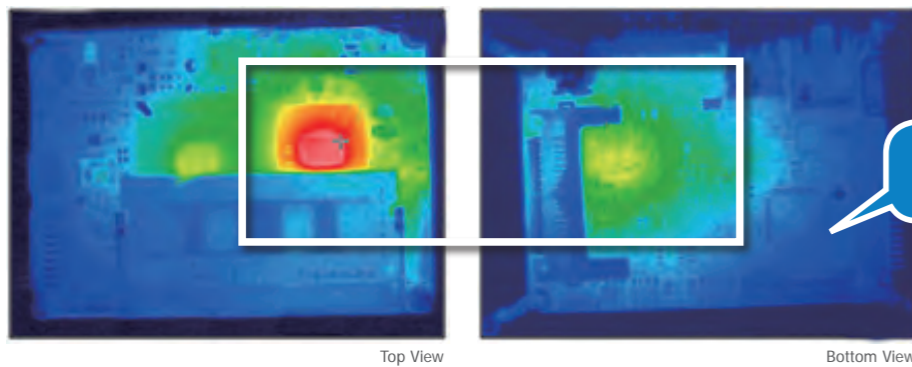
Easier System Integration

System integrators only need to consider the thermal solution for one side with MI/O SBC.

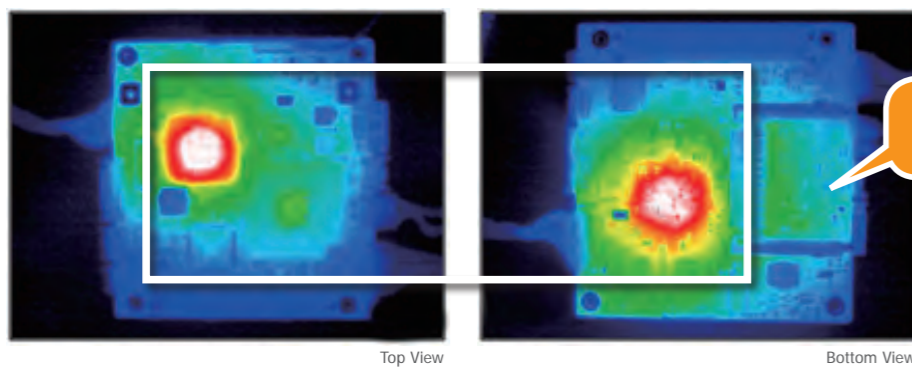
Better Reliability

MI/O SBC places thermal sensitive components on the bottom side to prevent heat problems and thus increasing the reliability of components.

MI/O CPU Board with Intel Atom N455



Other CPU Board with Intel Atom N455



MI/O Extension Module – Easy Expansion, Immediate Applications

MI/O Extension Module supports many embedded single board computers, and enables customers to get the most flexible I/O choices to fulfill all kinds of vertical applications. All MIOe modules are compatible with all MI/O SBC thanks to unified MIOe connector and system screw holes.

** Advantech provides a design reference guide for customers to design their own MI/O Extension Module.

MI/O-Compact



MI/Oe-210

- Multiple COM Ports (4x RS232/422/485, 2x RS422/485)

+ MIO-5250 MIO-5270
MIO-5290 MIO-5271

- Up to 6x RS232/422/485, 4x RS422/485



MI/Oe-220

- Triple Intel® Gigabit Ethernet

+ MIO-5250 MIO-5270
MIO-5290 MIO-5271

- Up to 5 x Intel Gigabit Ethernet



MI/Oe-230

- 48-bit LVDS or DisplayPort, 2 x USB 2.0

+ MIO-5250 MIO-5270
MIO-5290 MIO-5271

- Up to 2 x LVDS, 8 x USB 2.0

MI/O-Ultra



MI/Oe-110

- 2 x RS232, 2 x RS232/422/485, 2 x USB 2.0

+ MIO-2260 MIO-2261

- Up to 4xRS232, 2xS232/422/485, 2 x USB 2.0



MI/Oe-120

- Dual Intel® Gigabit Ethernet/ Mini-PCIe with SIM holder/ HDMI/ Audio with Amp./ 2 x USB2.0

+ MIO-2260 MIO-2261

- Up to 3 x Intel® Gigabit Ethernet/ 2 Mini-PCIe with SIM holder/ HDMI/ Audio with Amp./ 4 x USB2.0

MI/O Extension Evaluation Board



MI/Oe-DB5000

- Evaluation board for all MI/O SBCs
- Form factor: Micro ATX (244 x 170 mm)
- Digital Display Interfaces
- 3 PCIe x1
- USB 2.0/ USB 3.0
- HD audio line out
- LPC
- SMBus
- GPIO
- PCIe Mini Card, SIM holder
- SATA, SATA Power



MI/Oe-DB2000

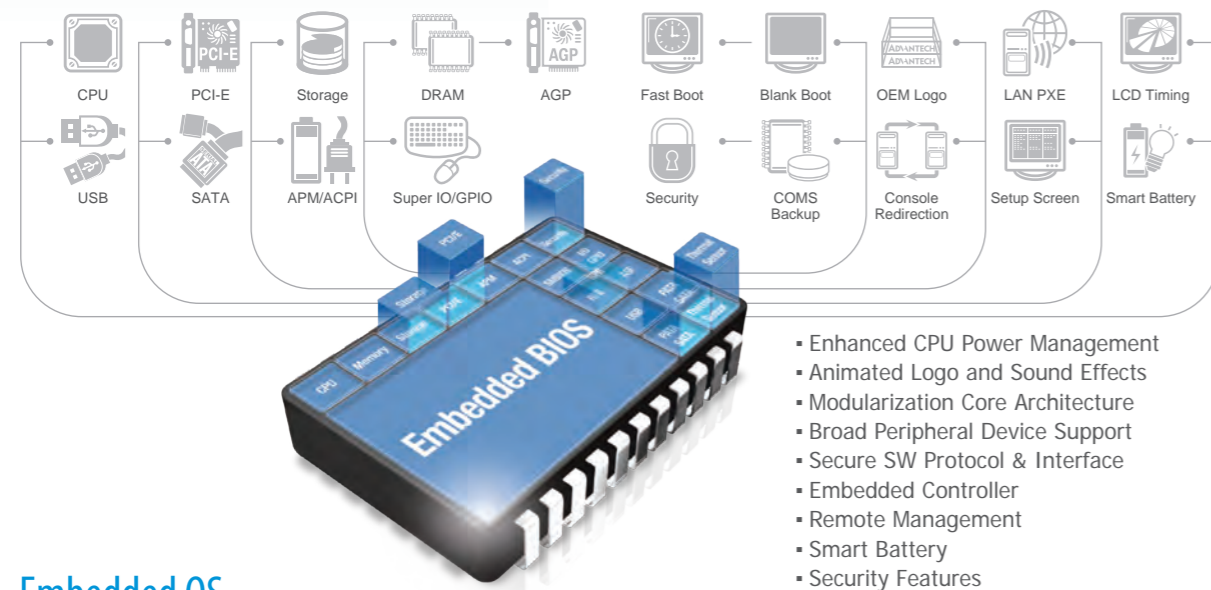
- Evaluation board for MIO-2262
- 115 x 165 mm
- 1 PCIe x1, 1 mini PCIe
- 6 USB 2.0
- 1 Display Port/ HDMI (HDMI supported by request)
- 1 SIM Card Holder

Embedded Software Services

Advantech provides a full range of services from BIOS, embedded OS, to software API utilities for the MI/O series. System integrators can reduce design effort and project complexity by using Advantech software services for MI/O.

BIOS Modularized Services

Advantech provides modularized Embedded BIOS services that deliver superior performance, compatibility and functionality that system integrators ask for. The many options and extensions enable a wider range of applications that differentiate your solution from the competition.



Embedded OS

Advantech provides custom Embedded OS images and built-in configuration utilities on our embedded platforms to facilitate system integration.

Windows Embedded OS

In the Embedded market, Windows Embedded OS is very popular due to its easy programming and maintenance features. We have Microsoft Valued Professional (MVP) experts on hand to offer the following:

- Windows XP Embedded Image (WES 2009, WES 7)
- Windows CE Image (CE 4.2, 5.0, 6.0 R3)
- Windows XPe Customization Service
- Board Support Packages (BSP) service
- Build-In utilities for easy configuration of boot logo, EWF protection, FBWF protection etc.

Linux

Linux is growing in popularity in the embedded market, many devices with simple and complex functions will use Linux as their OS. Advantech provides three kinds of Linux.

- General Linux distributions: Ubuntu, Redhat, Fedora & SUSE
- Mini-Linux service: a mini sized version but with full features and graphic UI
- Linux driver modification and configuration
- eSOS service is an emergency OS stored in BIOS ROM which can send e-mail error notifications

Real-time OS

QNX is an ultra-reliable OS for life-critical systems such as air traffic control systems, surgical equipment, and nuclear power plants. Vxworks is another real-time OS used for devices ranging from aerospace and defense, automotive telematics, and small-footprint consumer devices and industrial devices.

- QNX & VxWorks Evaluation Image
- QNX & VxWorks Board Support Package Service
- Professional Service: we offer GPIO, WDT, SMBus, I²C, HWM and brightness drivers, and software API

Embedded OS support varies by hardware platform.

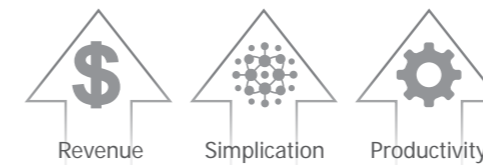
Empowered by SUSIAccess & iManager

SUSIAccess for Remote Device Management

SUSIAccess is a software application preloaded in MI/O SBC to centralize monitoring and managing of embedded devices. By providing a ready-to-use remote access solution, System Integrators can focus more on their own applications, and let SUSIAccess configure their system, monitor devices' health, and recover from system failure.

Benefits of SUSIAccess

- Monitor multiple devices remotely
- Schedule power management
- Protect systems from potential threats
- Access devices using remote desktop
- Lowers complexity for embedded system deployment
- Saves time and resources during development
- Increases system reliability
- Decreases after services cost



Intelligent Self-Management-iManager

All MI/O Compact series support iManager. iManager is an intelligent self-management cross platform tool that monitors system status for problems and reacts to take action if something is abnormal. iManager offers a boot up guarantee in critical low temperature environments so systems can automatically recover when voltages dip. iManager makes the whole system more reliable and more intelligent.

Enhance Reliability

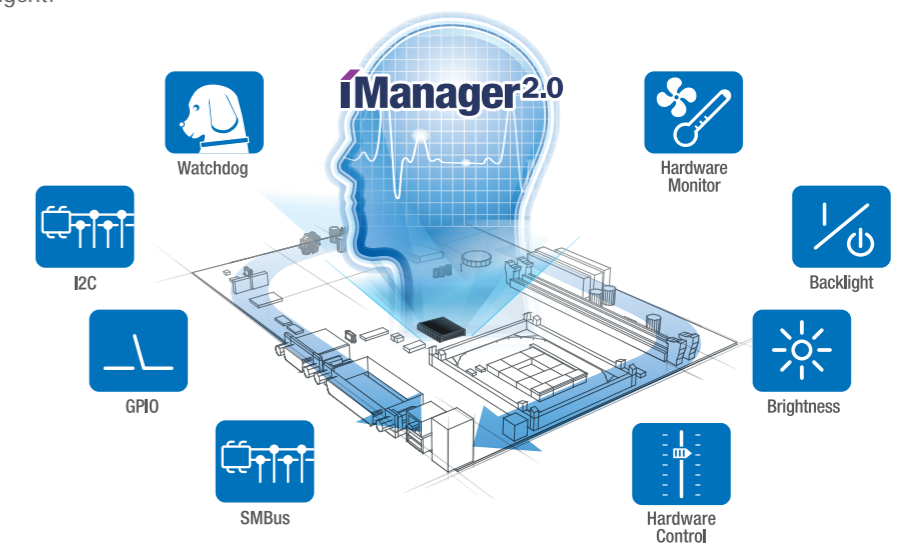
Multi-stage watchdog protection and dynamic thermal & fan control

Simplify Integration

Better performance and easier integrated cross platform API

Secure System

Real-time monitoring & response, and encrypted user EEPROM data storage



*Available in all MI/O-Compact SBC series.

MI/O Extension Chassis

Advantech provides system solutions for MI/O SBC and MIOe modules. The concept is like LEGO bricks. The system integrator chooses a suitable thermal solution, MI/O SBC, MIOe module and assembles them from top to bottom within the MI/O Extension chassis. The chassis has flexible I/O brackets for various modules, making system integration faster, easier and cost saving.

Optimized Thermal Design

- Maximized heat dissipation
- Intel® Atom™ to Core™ i platforms supported



Rich I/O Expansion Possibilities

- Modularized design for easy configuration
- Fast selection of single board computers and I/O modules



Space-saving, Fanless Design

- Dimensions (290 x 143 x 73 mm)
- Aesthetic Appearance



Fast Customization

- Logo
- I/O bracket
- Module



Highly Integrated System

- HDD/SSD/mSATA anti-vibration design
- Accepts commercial grade memory
- Windows/Linux/RTOS supported
- Wireless connectivity

Key Benefits:

More Flexibilities

MI/O chassis is compatible with all MI/O-Compact (3.5") series SBC and different MIOe modules. System integrators can change SBC and modules based on different applications and performance requirements. Due to the unified coastline of MI/O SBC, the I/O bracket for the upper layer is similar. For the bottom I/O bracket layer, it varies with different modules, making the chassis reusable.

More Functions

By changing MIOe modules, the whole system can meet any demands. Customers can not only choose Advantech's off-the-shelf MIOe modules but also design their own MIOe module with minimize time and cost.

Less Development Cost

With MI/O chassis' flexibility, system integrators can easily adopt any function demand by just changing the MI/Oe module. Even development of a new module is easy due to the flexibility of the MI/Oe connector.

Less Development Time

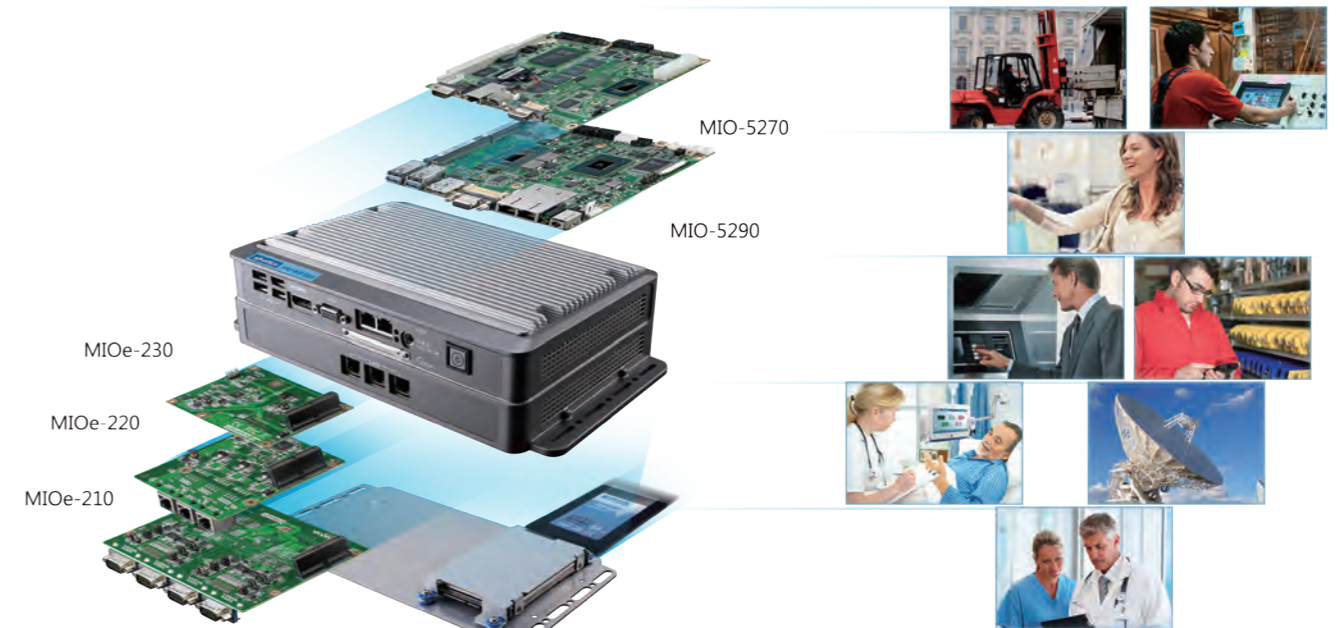
The flexibility of MI/O chassis and MI/Oe connector delivers the shortest development times in the industry. Take development of a new module for example. With MI/O, system integrators can finish their own module design within 3 months on average.

Easy Assembly

Assembling MI/O chassis with MI/O SBC and MIOe module is very easy. We try to simplify the mechanical design so it reduces complexity and time for system integrators.

Design Your MI/O Extension Chassis

Select your MI/O Extension SBC and MIOe modules according to your specific application requirements.



Match with Peripherals

Advantech has a complete product line of peripherals to provide a total solution, such as flash, memory, wireless modules and monitors. All peripherals are industry grade and can work under harsh environments.

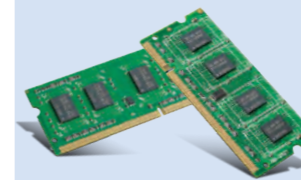
SQFlash

- 3 years longevity and warranty
- Industrial quality and service
- Full range product offering



SQRAM

- Wide temperature -40~85°C
- DDR/DDR2/DDR3 SO-DIMM & U-DIMM
- 30u Plating



Wireless

- 7 years longevity
- WiFi/Bluetooth, 3G and GPS module
- Standard temp. 0~60°C and wide temp. -40~85°C



Display

- 5.7"~55" size options
- LVDS, VGA, DVI, HDMI interfaces
- Standard temp. 0~50°C and wide temp. -20~70°C



*Customized brackets and logo silk ink are available depending on customer order volume.

Economic Multiple I/O SBC for CNC Device



Introduction

CNC (Computerized Numerical Control) applications are common in the China embedded vertical market for use in laser cutting or milling machines. CNC devices are usually controlled by a Single Board Computer at their core. Because of the rugged working environment requirements, such as dust and vibration, CNC devices traditionally adopted SBCs with PC/104 connectors which supported ISA or PCI interfaces on the mother board, which could then link to other application specific cards.

Application Requirements

CNC devices prefer stackable designs to guard against dust and especially vibration while working. They also require cost effective modular solutions. This particular customer was seeking an economical ruggedized SBC with multiple I/O that could be easily expanded. Traditional PC/104 and COM boards didn't satisfy the customer because the former had too little I/O support and the latter was over budget.

System Solutions

Advantech's Pico-ITX MIO-2261 board was chosen due to its multiple I/O and ruggedized design. Advantech MIO series is positioned in the market between PC/104 and COM. They hit the right balance between price and flexibility. MIO-2261 not only has multiple I/O, but also has the innovative MIOe connector which consolidates display port, 2 PCIe x1, USB 2.0, LPC, HD audio line out, SMBus, and power. The customer used the MIOe connector on the MIO-2261 board to design their own extension card which with LVDS, 3 x USB ports and SATA.

Benefits

- Cost, and schedule saving for module development.
- Ruggedized design for high-vibration environments.
- Maximum flexibility for expansion through the MIOe connector.



Innovative Form Factor for Metro System



Introduction

As city populations grow, Mass Rapid Transit systems play a crucial role in public transportation strategies in growing metropolitan areas. They can safely and quickly carry millions of passengers every day whilst reducing road traffic and pollution. To ensure that the whole system runs reliably, unforeseen events need to be minimized. Therefore, maintaining a safe and reliable service is the most important challenge.

Application Requirements

In order to provide a reliable non-stop service, metro systems need to overcome fluctuating temperatures, voltage spikes and other harsh environmental factors. This is especially important for in-vehicle mounted machines inside trains which need to be equipped with intelligent control functions to handle exceptions and critical condition events. If unforeseen events occur, they should be able to self-recover or be remotely recovered and rescued in the shortest time possible.

System Solutions

Advantech's new form factor SBC: MIO-5270 from the MIO-Compact series, based on the AMD Embedded G-Series platform, comes equipped with an intelligent management tool – iManager, developed by Advantech. This intelligent self-management agent is designed with a Smart Fan utility. With this feature a system's stability can be dramatically increased to better save energy and minimize noise. It's also empowered with a robust hardware monitoring tool whereby information can be utilized as an event trigger or data log, and can be easily integrated into an application or accessed by a remotely controlled program. iManager also supports an advanced Watchdog Timer to correct and reset a system. Lastly, Advantech's MIOe-220 is integrated with MIO-5270 to provide additional extended I/Os to meet application needs.

Benefits

- Compact SBC (146 x 102mm) with maximum flexibility through MIOe extension interface.
- Intelligent management tool – iManager to enhance system reliability.
- Auto-adjusting FAN speed based on temperature.
- Real-time monitoring of system status through local application or remote access.
- Rugged design for wide temperature and vibration challenges.



Embedded Core Services

Integrated Embedded Core Services for Design-in Success

Advantech Embedded Core Services are design-in oriented services. They are streamlined solutions which broadly integrate embedded boards, peripheral modules and software. We believe dedicated focus on Embedded Design-in services can fulfill electronic engineering demands at the design and integration cycle, and minimize uncertainty and risk.

Embedded Software Services

Services include Embedded BIOS services, OS services and software API & utilities to reduce project complexity.

Design-in Services

Design-in services can fulfill electronic engineering demands at the design-in phase and bring benefits which can shorten the design and integration cycle, minimizing uncertainty and risk.

Embedded Boards

A full spectrum of embedded boards in multiple form factors from computer on modules, single board computers, to industrial motherboards.

Embedded Systems

Intelligent systems include fanless embedded box PCs, digital signage players, MI/O Extension Chassis, Industrial Motherboards Chassis, and RISC-based box PCs. All integrated with Advantech software service to enhance system manageability and security.

Peripheral Modules

Industrial peripheral products such as storage, wireless, and touch modules, along with Advantech's software turn-key solutions, provide innovative choices for industrial PC applications.

Regional Service & Customization Centers

China

Kunshan
86-512-5777-5666

Taiwan

Taipei
886-2-2792-7818

Netherlands

Eindhoven
31-40-267-7000

Poland

Warsaw
48-22-33-23-740 / 741

USA

Milpitas, CA
1-408-519-3898

Worldwide Offices

Greater China

China 800-810-0345
Beijing 86-10-6298-4346
Shanghai 86-21-3632-1616
Shenzhen 86-755-8212-4222
Chengdu 86-28-8545-0198
Hong Kong 852-2720-5118

Taiwan 0800-777-111
Rueiguang 886-2-2792-7818
Yang Guang 886-2-2792-7818
Xindian 886-2-2218-4567
Taichung 886-4-2378-6250
Kaohsiung 886-7-229-3600

Asia Pacific

Japan 0800-500-1055
Tokyo 81-3-6802-1021
Osaka 81-6-6267-1887

Korea 080-363-9494
Seoul 82-2-3663-9494

Singapore
Singapore 65-6442-1000

Malaysia 1800-88-1809
Kuala Lumpur 60-3-7724-3555
Penang 60-4-397-3788
60-4-397-4188

Indonesia
Jakarta 62-21-769-0525

Thailand
Bangkok 66-2-248-3140

India 1800-425-5071
Bangalore 91-80-25450206

Australia 1300-308-531
Melbourne 61-3-9797-0100
Sydney 61-2-9476-9300

Europe

Europe 00800-2426-8080

Germany
Münich 49-89-12599-0
Hilden 49-2103-97-885-0

France
Paris 33-1-4119-4666

Italy
Milano 39-02-9544-961

Benelux & Nordics
Breda 31-76-5233-100

UK
Reading 44-0118-929-4540

Poland
Warsaw 48-22-33-23-740/741

Russia 8-800-555-01-50
Moscow 7-495-232-1692

Americas

North America 1-800-866-6008
1-888-576-9668
Cincinnati 1-513-742-8895
Milpitas 1-408-519-3898
Irvine 1-949-420-2500

South America
Mexico 52-55-6275-2777

Brazil 0800-770-5355
São Paulo 55-11-5592-5355

ADVANTECH

Enabling an Intelligent Planet

www.advantech.com

Please verify specifications before quoting. This guide is intended for reference purposes only.

All product specifications are subject to change without notice.

No part of this publication may be reproduced in any form or by any means, electronic, photocopying, recording or otherwise, without prior written permission of the publisher.

All brand and product names are trademarks or registered trademarks of their respective companies.

© Advantech Co., Ltd. 2013

860000009